

COMPANY PROFILE

PT Polytama Propindo



Focus Beyond Service



Focus Beyond Service



For more information, visit our website!



SCAN HERE!

PT Polytama Propindo is constantly challenging ourselves to meet the highest standards of quality as measured by our customers. Thus, we see competition as a tool to push the company forward and increase our capabilities to reach the highest standards. It also motivates us to do our best to win the competition. At Polytama, customer focus with excellent and friendly service becomes our main approach to excel in the market. This approach represents our concept of a total customer care, which goes well beyond the classic activities of customer service and support.

Contents :

Beyond Service through Genuine Care	> About The Company	9
	> Corporate Structure	12
	> Vision and Mission	14
	> Core Values	16
Beyond Service through Technology	> Location Map	20
	> Milestone	22
	> Products and Technology	24
Beyond Service through Quality	> Integrated Service	34
	> Certifications	36
	> Contact Us	38

Beyond Service through Genuine Care

With years of experience working within the polypropylene industry, Polytama will take every opportunity to make a difference in the way our genuine care is delivered to our customers and business partners. As a company, we pride ourselves in meeting and exceeding customer expectations, because we value consistency and believe in providing service excellence full of sincerity, experience and our desire to help them.



Polytama is committed
to continue our business
in various ways

//01

Company Overview

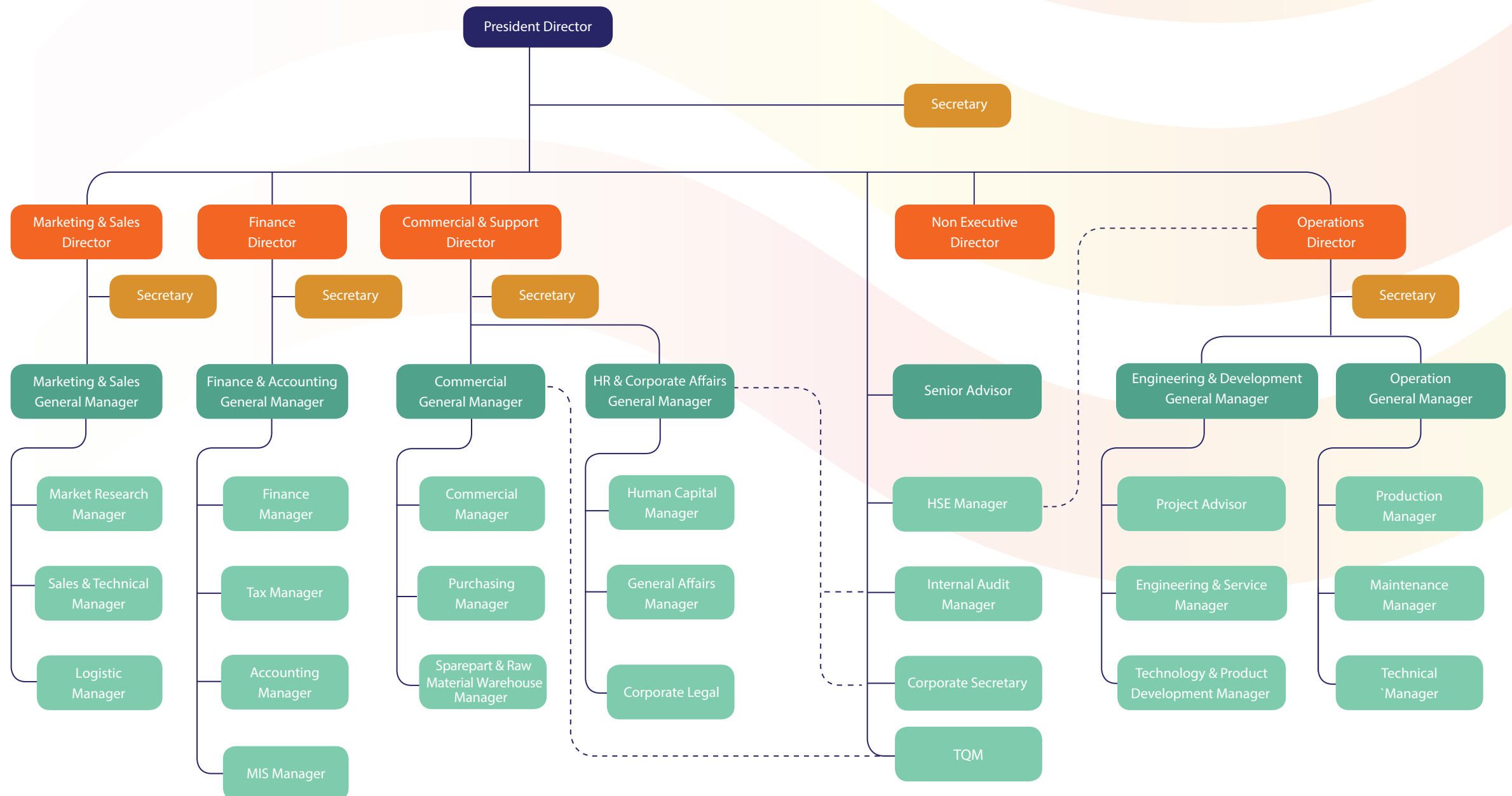


PT Polytama Propindo is a company focusing on the production of Polypropylene Resin (PP Resin). The Company was established in 1993 by few companies as shareholders: PT Tirtamas Majutama (80%), BP Chemicals Investments Limited (10%), and Nissho Iwai Corporation (10%). Aligned with our development, Polytama is currently owned by PT Tuban Petrochemical Industries (TPI) and Pasio Investments B.V., in which they owned the company's shares of 80% and 20% respectively.

Polytama Plant is located in Juntinyuat Subdistrict, Indramayu, West Java. As one of the largest petrochemical companies, our Plant uses one of the best processing technologies in the world, the Spheripol, which license was owned by Montell (now LyondellBasell). The raw material supply, the propylene gas with high purity, is obtained from Pertamina Refinery of UP-VI (now RU-VI) in Balongan, Juntinyuat.



Corporate Structure



Vision and Mission

Vision

To be a resilient, dynamic leader of polypropylene producer in Indonesia towards satisfied customer and stakeholder orientation.

Mission

- » To be the market leader of polypropylene products in Indonesia.
- » Utilizing current capacity to the optimum level for higher added value products.
- » Encourage efficiency and effectiveness in process, manpower and cost.
- » Continuous modernization of process, technology, machineries, and facilities throughout the company operation.
- » Developing own technology in polymer manufacturing particularly in process, recipes and customizations of products as per market requirements.
- » Implementing multi-sourcing supplies system, particularly for key raw materials to enhance the reliability of the company
- » Developing sustainable human resources system that would guarantee the company continuation for foreseeable future as well as the employees' welfare
- » Adopting Integrated Management System comply with ISO 9001 – ISO 14001 – ISO 22000 – ISO 45001

//04

Core Values



Polytama has a long lasting slogan : "Innovation Forever". Through this slogan, Polytama proved itself as a company with an ability to adapt and improvise under various circumstances. With the support of a solid professional team, Polytama has overcome so many challenges along the way.

Today, Polytama is ready to set off to deliver new success to our customers and business partners, while at the same time contributing to Indonesia's economic growth by utilizing the country's rich natural resources, with a focus on the secondary management of oil and gas through the manufacturing industry.

• Safety

To cultivate a safe, healthy and safe working environment and contribute positively to the environment

• Innovation

To develop new ideas by empowering human resources and sustainable technologies

• Accountability

To be responsible in delivering good quality work and result

• Professionalism

To work with sincerity and discipline and committed to deliver optimum service for all



Beyond Service through Technology

Moving forward, Polytama is ready to accelerate the next wave of revenue growth, service excellence, and business efficiency through adopt our technology. Polytama Plant utilizes the Spheripol process, the world's most widely used technology for polypropylene production. The technology enables us to provide a unique and innovative platform, with flexible operating conditions to manufacture added-value polypropylene with novel architecture and enhanced properties.



//05

Location Map

PT POLYTAMA PROPINDO

20

COMPANY PROFILE

Head Office:

Jl. Jend. Sudirman Kav. 10-11
Gedung MidPlaza 2, 20th floor
Jakarta 10220

Polytama Plant Site:

Jl. Raya Juntinyuat Km. 13
Kecamatan Juntinyuat
Kabupaten Indramayu

PT POLYTAMA PROPINDO

21

COMPANY PROFILE

Milestone

22



ESTABLISHMENT

PT Polytama Propindo was established in Jakarta in 1993 by PT Tirtamas Majutama, BP Chemicals Investments Limited, and Nissho Iwai Corporation. They owned the company's share by 80%, 10% and 10% respectively. The company started its first production in 1995 with a capacity of 100,000 MT per year.



SHARE OWNERSHIP

PT Tirtamas Majutama transferred all its shares in PT Polytama Propindo (as well as in PT Trans Pacific Petrochemical Indotama and PT Petro Oxo Nusantara) to PT Tuban Petrochemical Industries in 2004, making it the major shareholder of the company with 80% share. Meanwhile, the remaining 20% share is owned by Pasio Investment B.V.



CAPACITY ENHANCEMENT

The plant capacity continued to be enhanced until it reach 300,000 MT per year in 2019.



FOCUS BEYOND SERVICE



NEW MULTI SOURCE SUPPLY

In 2015, Polytama established a facility at Cirebon Port to transfer its raw material (propylene gas), and built land transportation system from the Port to the company's plant.



QUALITY MANAGEMENT

- The company obtained the Quality Management System ISO 9001, Environment Management System ISO 14001, Occupational Health and Safety Management ISO 45001, Food Safety Management System ISO 22000, SNI, and Halal Certificate.
- Polytama received the Zero Accident Award from the Ministry of

Labour for its success in implementing Occupational Health and Safety Program from December 1, 2016, to December 31, 2019.

- The company also received an award as "Corporate Taxpayer with the Biggest Contribution in Fiscal Year 2015" from the Head of the Tax Office of Pratama (KPP) Indramayu Region, DJP West Java II.
- In 2020, Polytama was awarded with **GOLD PROPER** by the Ministry of Environment and Forestry of The Republic of Indonesia, making Polytama the only company from the Petrochemical Sector to achieve so.



FOCUS BEYOND SERVICE

// 07

Products and Technology

There are a growing number of PP resin products . Under our brand, Masplene®, we deliver materials and products that are key to advanced solutions to modern challenges, such as extruded sheets, transparent film, yarn, fiber, as well as injection molding grade polypropylene .

PP yarn is an ideal material for woven bag used for packing various commodities and industrial products, such as portland cement, fertilizer, rice, wheat flour, polyester and PTA, where flexibility and high strength are essential requirements.

PP fiber is used in the manufacturing of carpets, sewing thread, plastic ropes and webbing tapes. Meanwhile, PP-based extruded plastic sheet is transformed into thermoformed containers and general ware used in a variety of applications.

PP-based films, such as BOPP, CPP and IPP are used for a wide variety of packaging, including food, cigarettes, and garments.



Polytama's Plant utilizes the Spheripol process -the world's most widely used technology for polypropylene production- under a 25 year license agreement with LyondellBasell. With more than 115 licensed lines around the globe and 40 years of continuous innovation, LyondellBasell is a leading pioneer in the development of polypropylene. With a combination of modern technology and high quality products, Polytama is able to ensure the best value proposition to various industries in Indonesia.

Additionally, Polytama also has a well-established distribution network that includes all major cities in Java Island, such as Greater Jakarta dan Bandung on the west, Semarang and Solo on the center, and Surabaya on the east. Our plant site in Juntinyuat, Indramayu makes it easy for our distribution channel to reach customer points across Java as well as strategic Ports that connect Java Island with other islands.



WHY GRANULE WHY PELLET



Granule (MAG) :

is a virgin polypropylene prior to be process through pelletizing extruder.



Pellet (MAS) :

is a virgin polypropylene material that has been through the melting process in pelletizing extruder.



GRANULE FORM :

1. Affordable
 - Raw material cost is cheaper than pellet form
 - Cost-efficient for electricity (we recommend to lower the extruder's temperature)
2. Similar quality to pellet form.
3. Mainly recommended for extruder machine with low – medium capacity. For high capacity, technical assistance services is provided
4. Recommended for material handling by screw conveyor. Technical assistance services are provided for autoloader and other handlers.
5. Continuous product availability.

► **Masplene[®]** Granules is a **WORLD CLASS VIRGIN PP PRODUCT** that provides a **PRIME SOLUTION** in terms of high quality, affordability and reliability product availability.

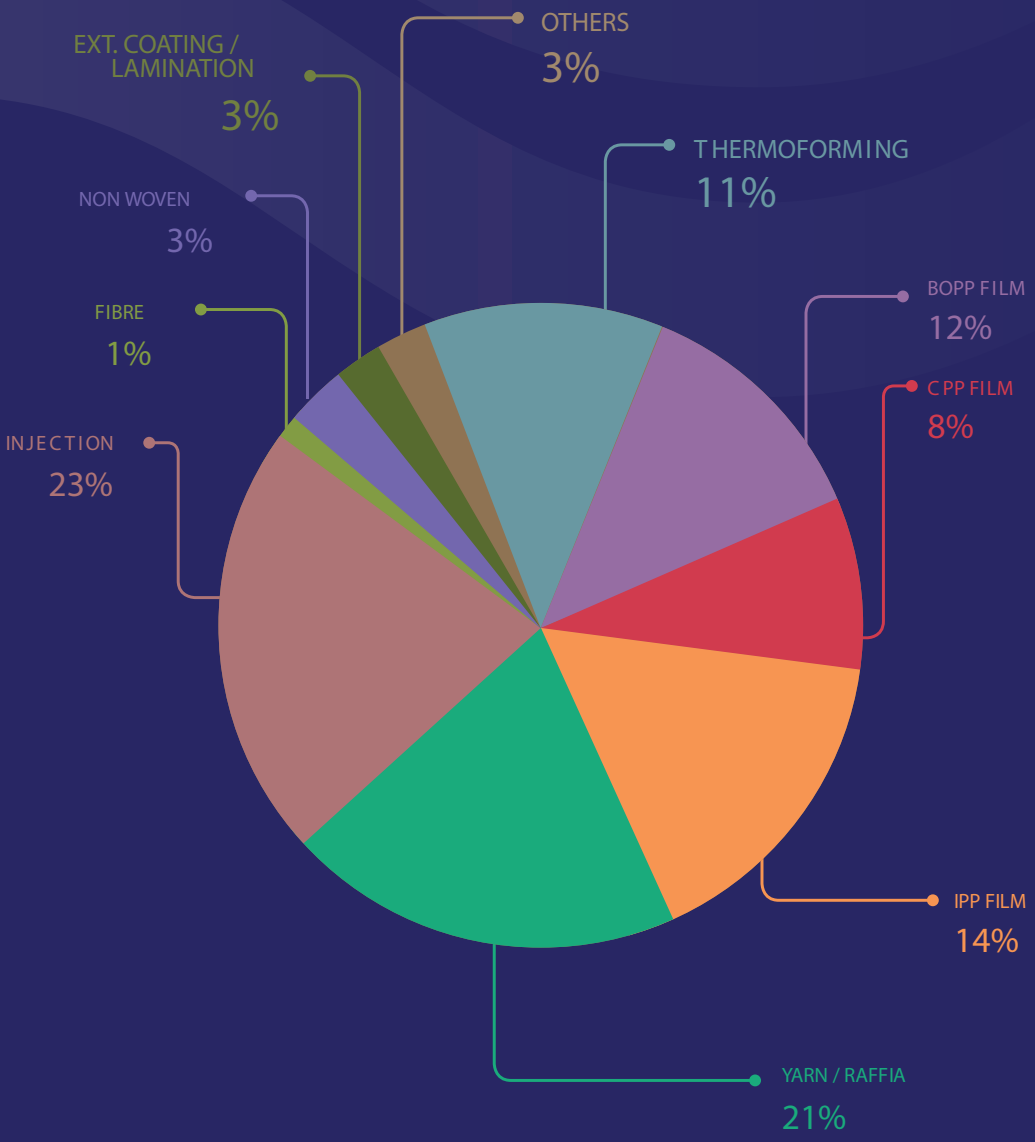
TYPE OF PRODUCTS

GRADE	MFI g/10min	APPLICATION	CHARACTERISTICS
EXTRUSION THERMOFORMING			
MAS 2158	1.8	• Drinking Cups	• Excellent impact strength
MAG 2158	2.0	• Jelly cups	• Outstanding processability
		• Sheets	• Odorless
		• Trays	
MAS 2159	2.3	• Drinking Cups	• Good impact strength
MAG 2159	2.6	• Jelly cups	• Outstanding processability
		• Sheets	• Odorless
		• Trays	
MAS 3160	2.7	• Drinking Cups	• Excellent optical properties
MAG 3160	3.0	• Jelly cups	• Good impact strength
MAG 2160		• Sheets	• Outstanding processability
		• Trays	• Odorless
YARN			
MAS 2345	2.0	• Jumbo Bag	• Outstanding processability
MAG 2345		• Woven bag	• Excellent tenacity
		• Blow molding product < 2 litres	
MAS 2352	2.4	• Jumbo bag	• Outstanding processability
MAG 2352	2.8	• Woven bag	• High tenacity
MAS 3352	3.2	• Woven bag	• Outstanding processability
MAG 3352	3.5	• Waring	• Good tenacity
		• Block bottom valve bag	• Low water carry over
		• Plastic ropes	
MAS 3355	4.1	• Woven bag	• Outstanding processability
MAG 3355	4.6	• Waring	• Good stiffness
		• Block bottom valve bag	• Low water carry over
		• Plastic ropes	
THIN WALL INJECTION MOLDING			
MAS 9475	60	• Thin wall food containers	• Excellent clarity & gloss
		• Thin wall housewares	• Good impact strength
			• Good processability
NON-WOVEN SPUNBOND			
MAS 8770	35	• Shopping bags	• Excellent flowability
		• Napkins	• Excellent drawability & spinnability
		• Disposable clothes	• Good processability

GRADE	MFI g/10min	APPLICATION	CHARACTERISTICS
INJECTION			
MAS 4402	7.0	• Housewares	• Outstanding processability
MAG 4402	7.0	• Cutlery	• Good impact strength
			• Microwaveable
MAS 5402	12.0	• Housewares	• Outstanding processability
MAG 5402	12.0	• Closures	• Good impact strength
		• Containers	• Microwaveable
		• Cutlery	
MAS 6402	17.0	• Housewares	• Outstanding processability
		• Containers	• Good Melt flow
			• Microwaveable
MAS 7402	23.0	• Housewares	• Outstanding processability
MAG 7402	25.0	• Containers	• Good Melt flow
			• Microwaveable
IPP FILM			
MAS 5637	10.5	• Bags for garment & laundry	• Food packaging
MAG 5637	11.0	• Food packaging	• Outstanding processability
			• Good openability
			• Good side color
			• Good transparency
M - CPP FILM			
MAS 4508	8.0	• CPP Plain & Metallized Film	• Outstanding processability
			• Good film strength and stiffness
			• Applicable for metal bonding
BOPP FILM			
MAS 3256	2.9	• BOPP Plain and Metallized film	• Outstanding processability
			• High transparency and gloss
FIBER			
MAS 7702	24.5	• Multifilament	• Outstanding processability
		• Sewing thread	• Excellent spinability
		• Carpets	• Good tenacity
		• Webbing tapes	

CURRENT
PRODUCT MARKET
IN INDONESIA

based on year 2017



Beyond Service through Relation

Polytama constantly challenges ourselves to meet the highest standards of quality as measured by our customers. In addition to product quality, our service is aimed to make our customers feel warmly welcomed, cared, valued, and appreciated. In order to maintain a long-term cooperation, we strive to earn customer loyalty through intimate business relationship with all of our customers, thus protecting our strong reputation and ensuring a healthy and future ready, thriving business.



//08

Integrated Service



the launch of 'Online Order Information' system, which allows customers to track the status of their orders, payments and expected date of order delivery.

To maintain a strong customer loyalty, we guarantee customer-focused services, including on-time delivery, hassle-free administration process, as well as relatively flexible method and terms of payment. Additionally, in order to establish a genuine and reliable communication between our sales force and the customers, we have been intensively providing information to our customers regarding current prices and market development via phone calls, emails, and other social media.

**READY
TO SERVE
SINCERELY**



Initiating an intimate business relationship is at the heart and soul of our service. This means we are ready to become our customers' trustworthy, genuine, sincere, and reliable partner. As we eager to provide the best engaging service for our customers, we continue to maintain and improve our level of service while applying a warm welcome and proactive approach to find the best solution for our customers' needs and complaints.

Reliability in terms of operations and production enable us to deliver competitive products. Not only created product variants to widen our reach to customers, we also continue to improve our customer services level, such as through



// 09

Certifications

Various efforts in terms of business transformation has been carried out carried out by the company with the aim to improve our ability to provide the best products. Public appreciation, recognition and acknowledgement towards Polyrama is essential to encourage the company to improve our performance, so that we will be able to provide better service in the future. All these achievements and rewards including Zero Accident and TKDN received by Polyrama also has its own pride value for all of the company's employees.

» TKDN 81%

TKDN 81%
(Tingkat Kandungan Dalam Negeri)

» Halal Certificate



» GOLD PROPER



» SNI

» Environmental Management System
ISO 14001

» Quality Management System ISO 9001

» Food Safety Management System
ISO 22000» Occupational Health and Safety
Management System ISO 45001

//10

Contact Us



For further information about our products and services, we encourage you to contact us in the following addresses and phone numbers.

Head Office:

Jl. Jend. Sudirman Kav. 10-11
MidPlaza 2, 20th Floor
Jakarta 10220

Phone : +62 21 570 3883
Fax : +62 21 5704689

Plant Site:

Jl. Raya Juntinyuat Km. 13
Kecamatan Juntinyuat
Kabupaten Indramayu

Phone : +62 234 428 002
Fax : +62 234 428 616

  @polytamaSIAP

  PT POLYTAMA PROPINDO

 www.polytama.co.id

#PolytamaSIAP



PT POLYTAMA PROPINDO

Head Office:

Jl. Jend. Sudirman Kav. 10-11
MidPlaza 2, 20th Floor
Jakarta 10220

Phone : +62 21 570 3883
Fax : +62 21 5704689

Plant Site:

Jl. Raya Juntinyuat Km. 13
Kecamatan Juntinyuat
Kabupaten Indramayu

Phone : +62 234 428 002
Fax : +62 234 428 616
